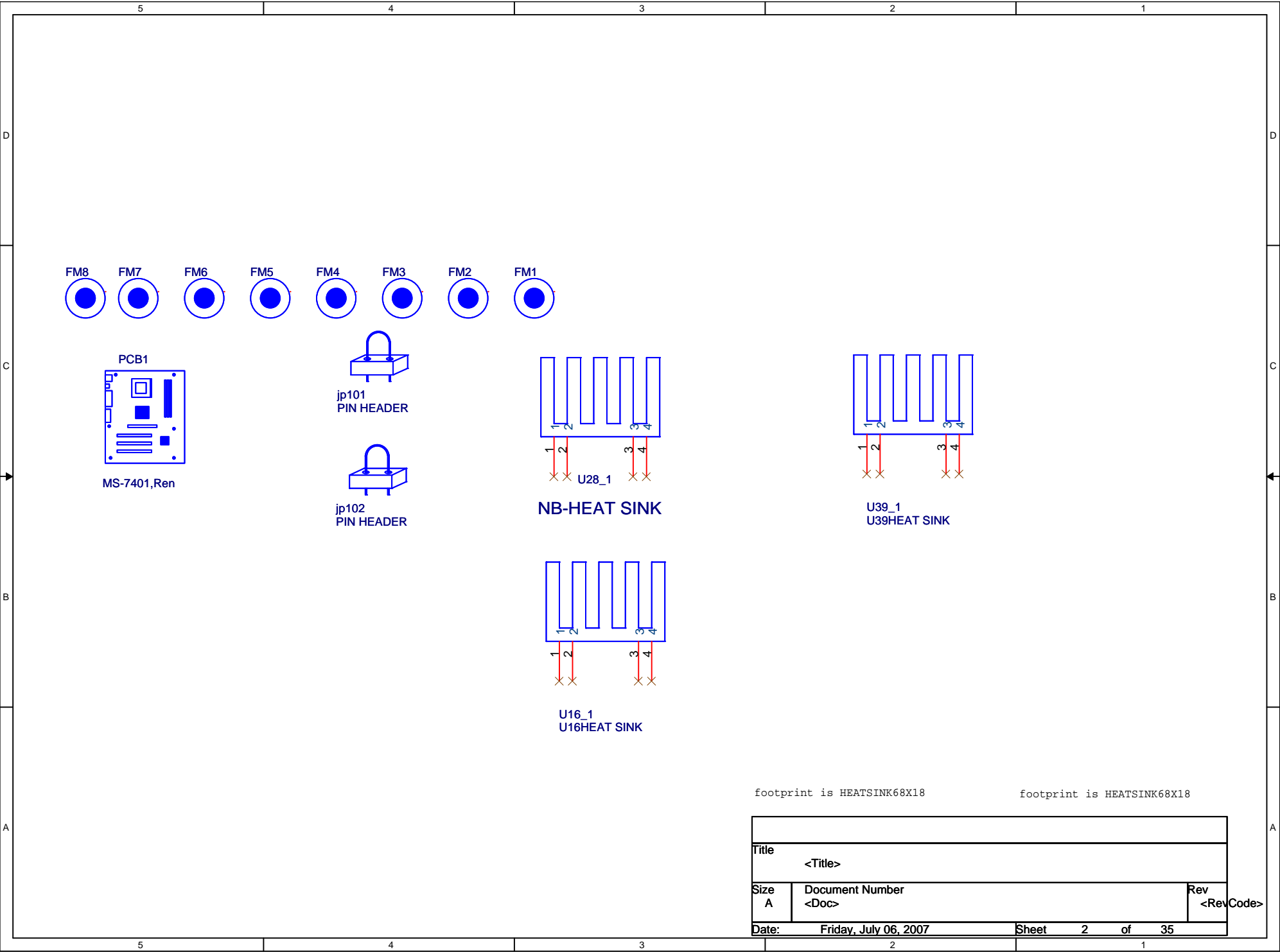
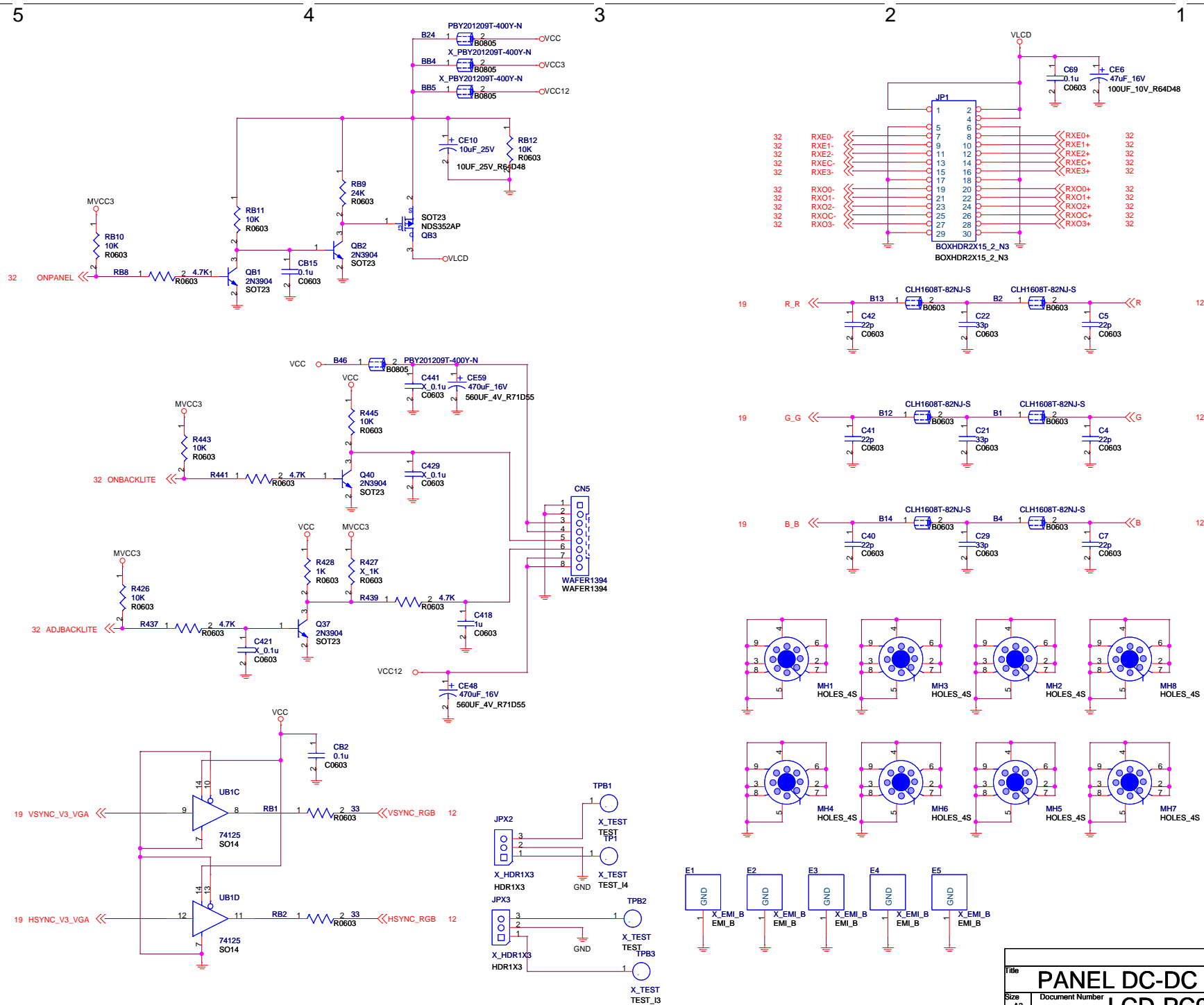


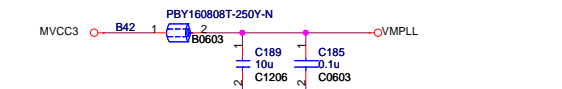
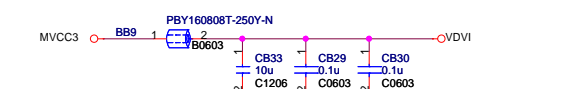
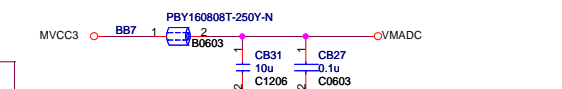
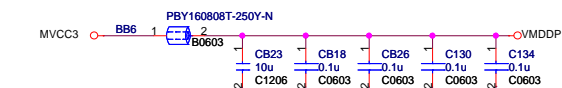
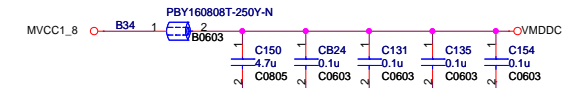
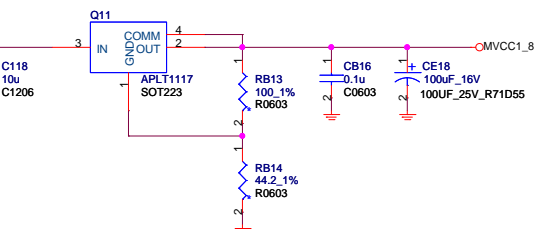
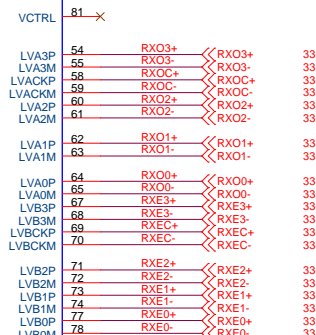
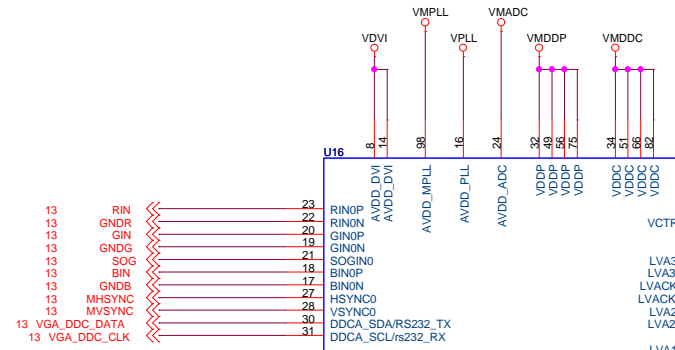
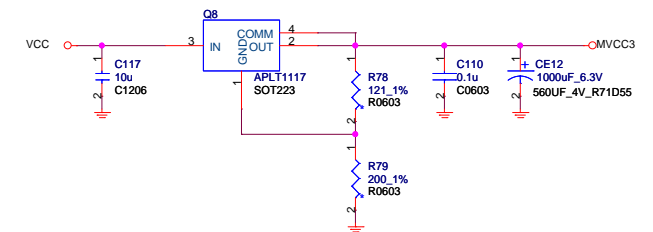
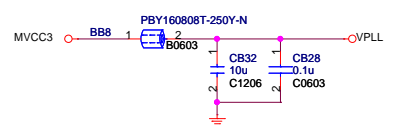
Title			PANEL DC-DC POWER	
Size	Document Number	LCD-PC945		Rev
B				S0.2
Date:	Thursday, July 05, 2007	Sheet	1	of 35





Title			PANEL DC-DC POWER	
Size	A3	Document Number	LCD-PC945	
Date:	Thursday, July 05, 2007	Sheet	3	of 35
Rev	S0.2			

5 4 3 2 1



D

D

C

C

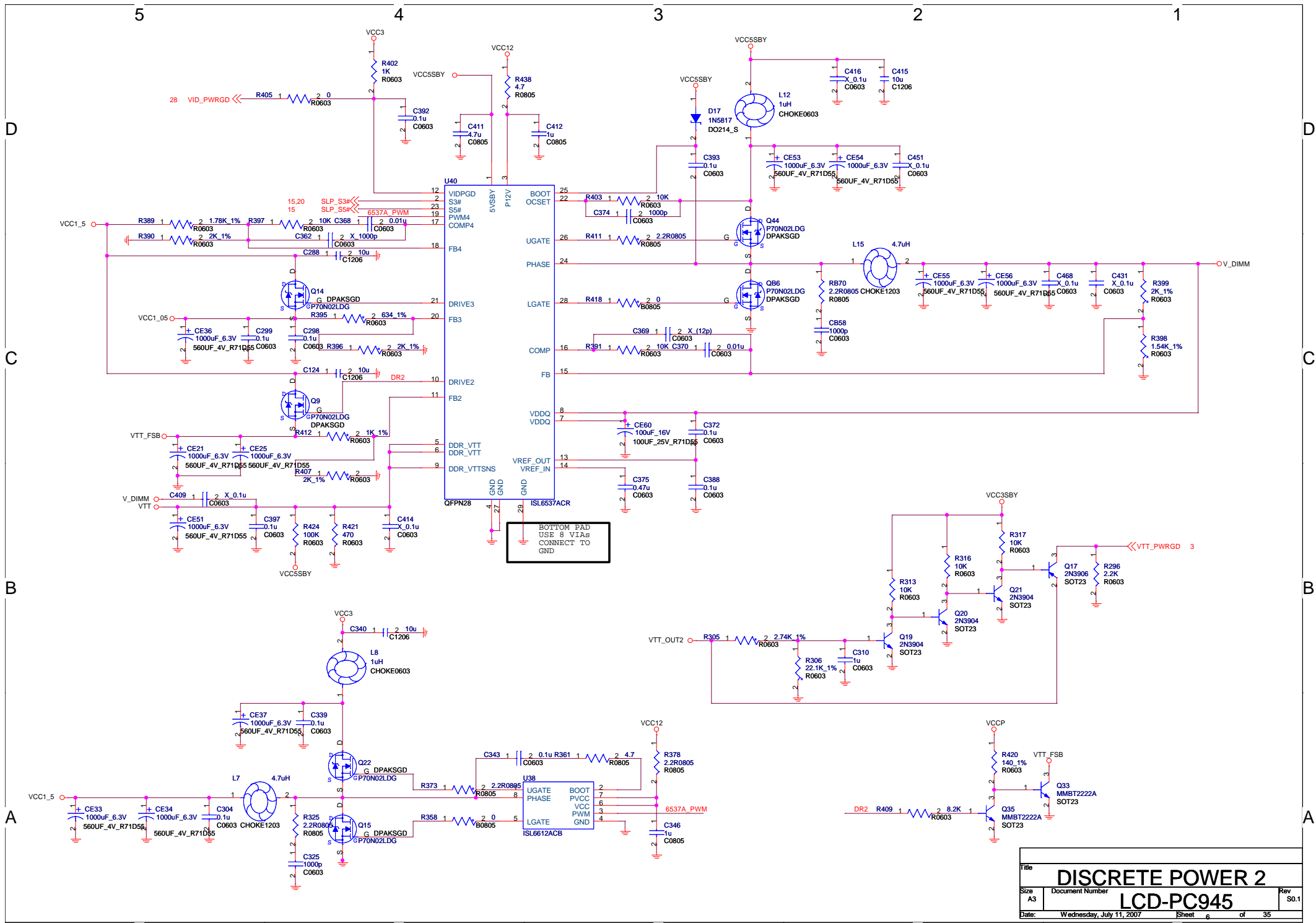
B

B

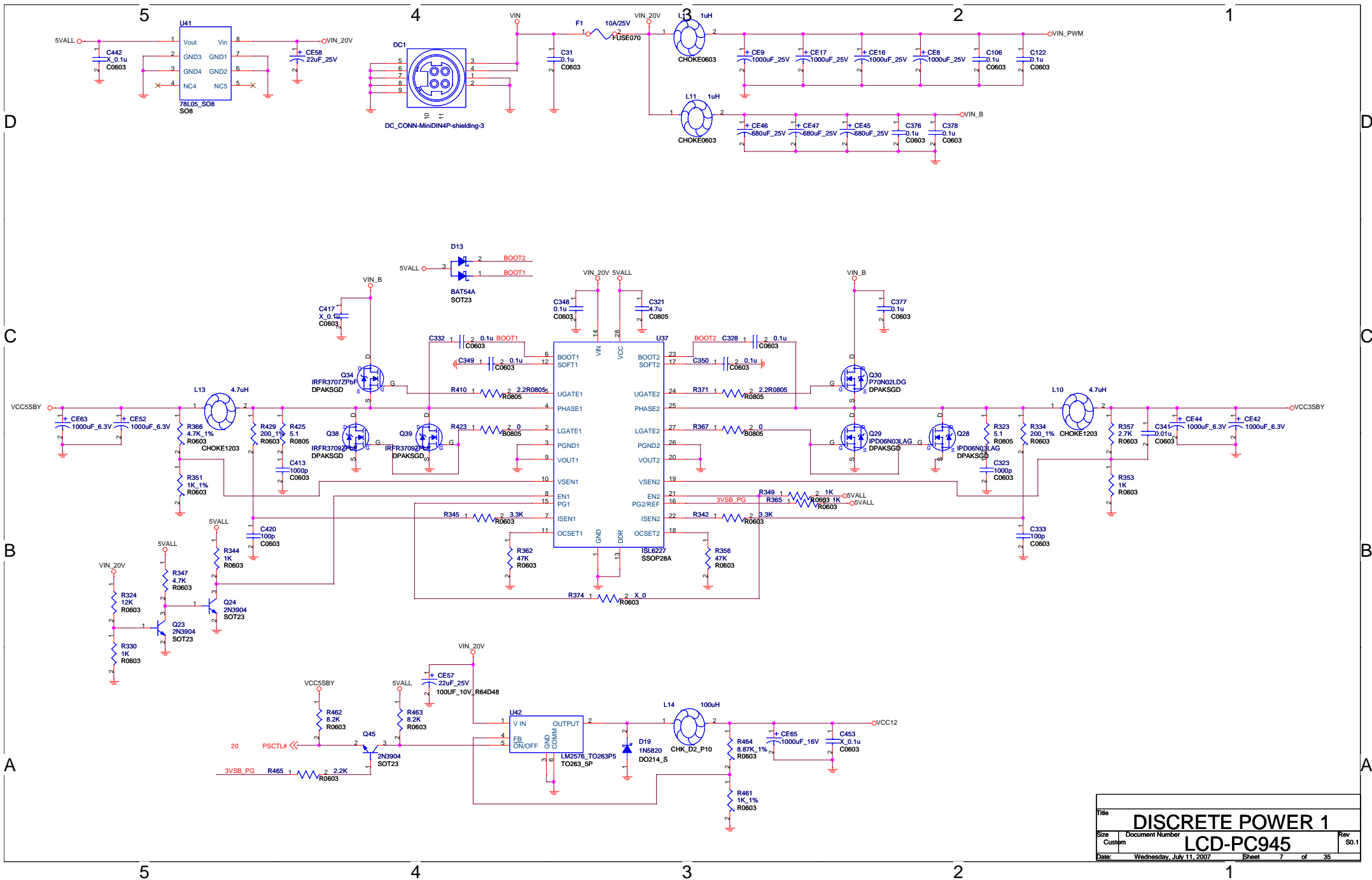
A

A

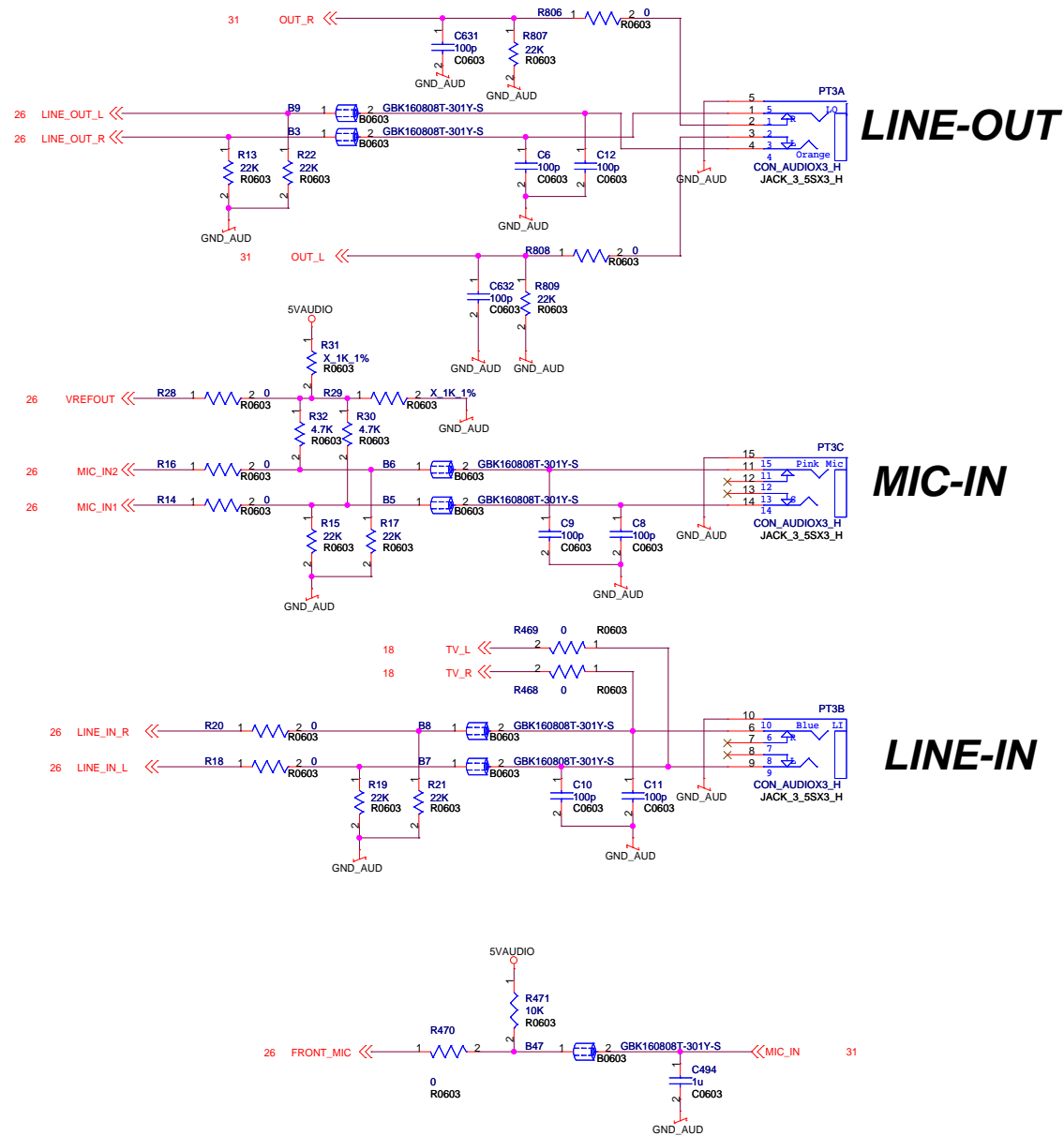
Title			TRANSMITTER	
Size	Document Number	LCD-PC945		Rev
A3				S
Date:		Wednesday, July 11, 2007	Sheet	4 of 35



Title			DISCRETE POWER 2	
Size	Document Number	LCD-PC945		Rev
A3				S0.1
Date:	Wednesday, July 11, 2007	Sheet	6	of 35



Title		DISCRETE POWER 1	
Size	Custom	Document Number	LCD-PC945
Date	Wednesday, July 11, 2007	Sheet	7 of 35



Title			AUDIO CONNECTOR	
Size	Document Number	LCD-PC945		Rev
A3				S0.2
Date:	Tuesday, July 10, 2007	Sheet	9	of 35

5 4 3 2 1

D

D

C

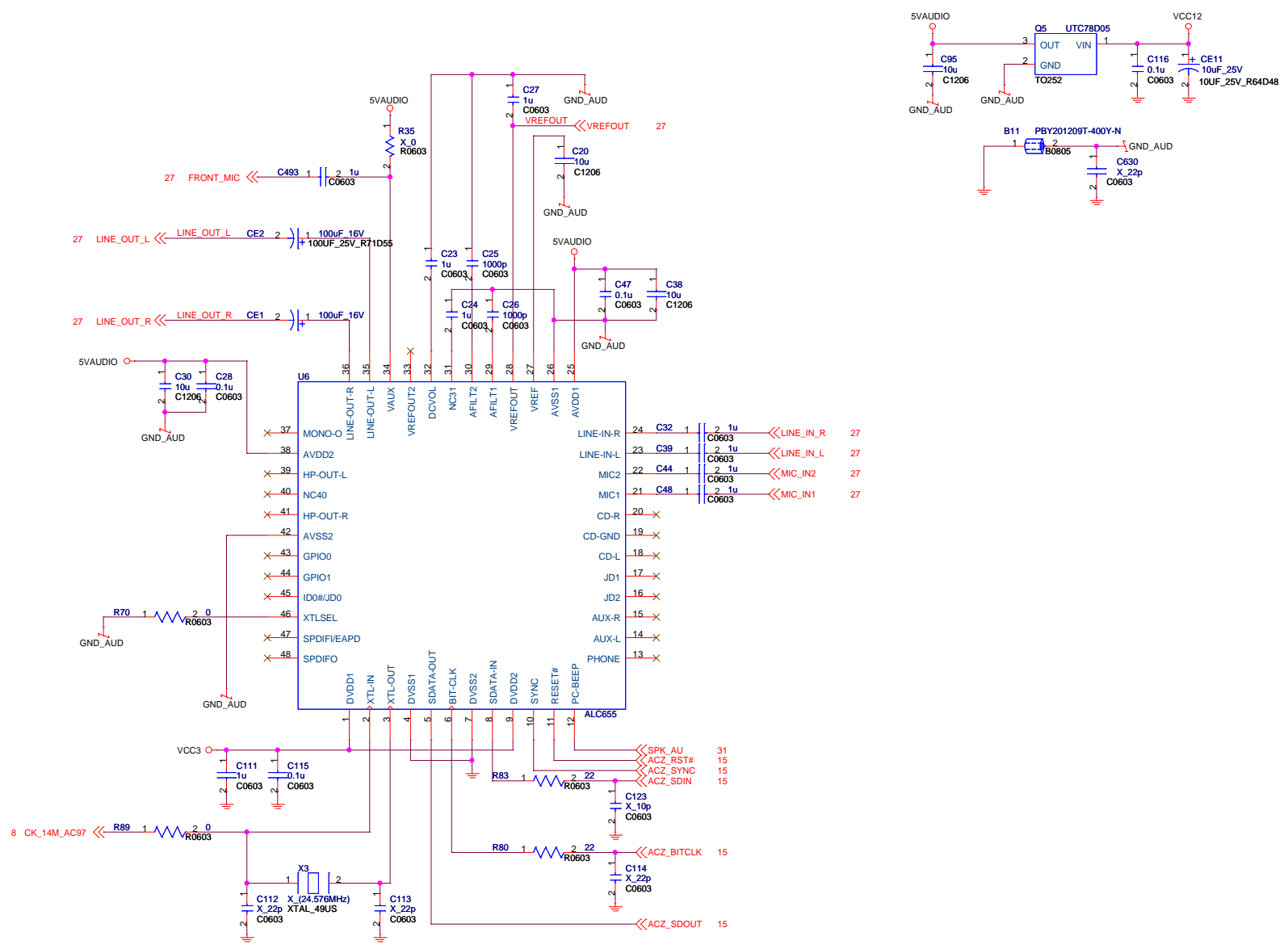
C

B

B

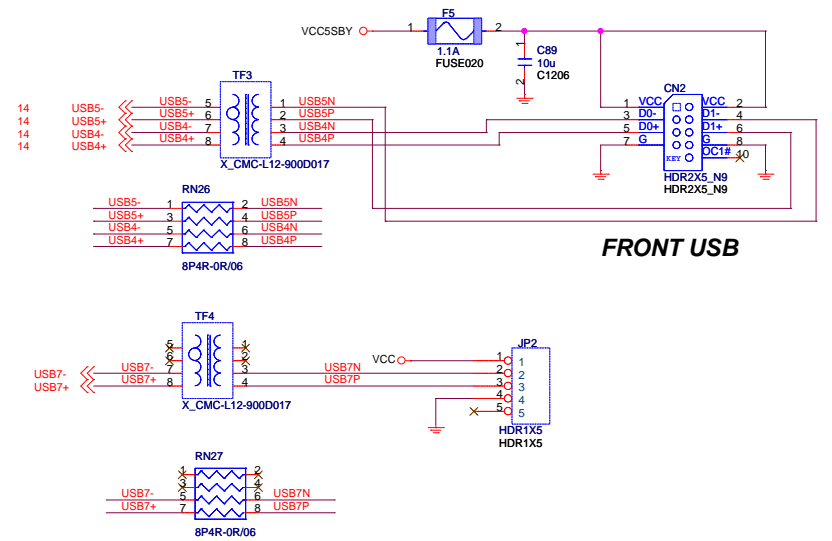
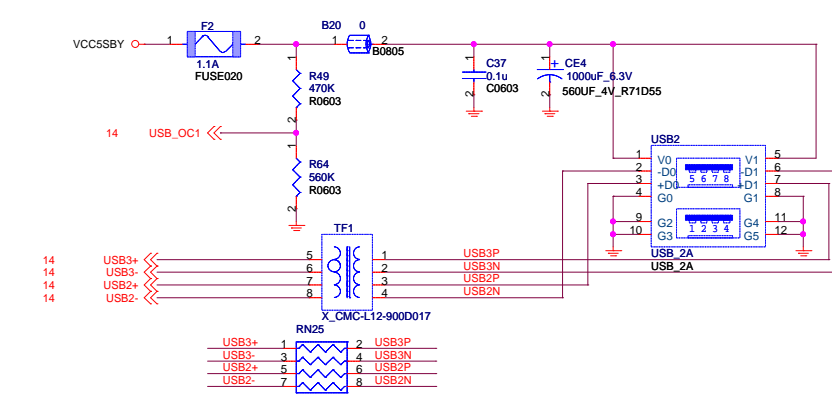
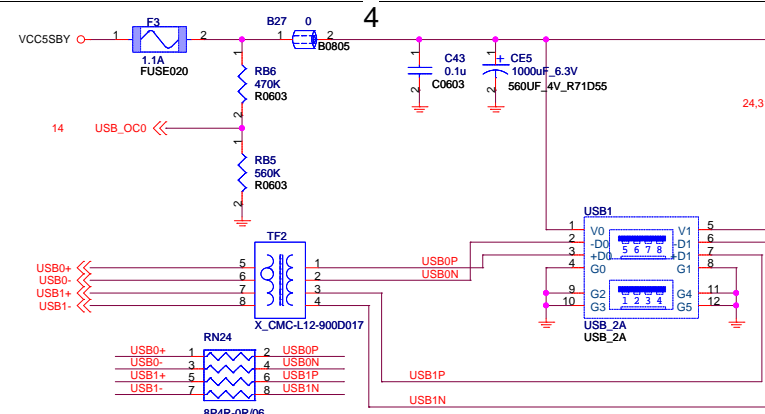
A

A

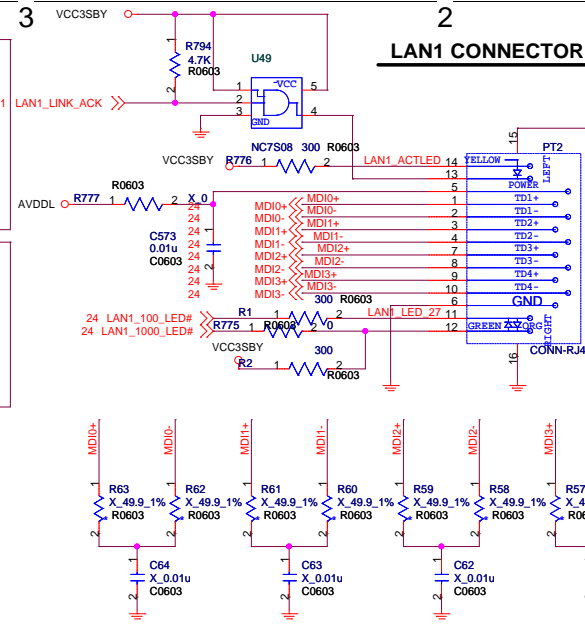


Title				AC97 CODEC(ALC655)	
Size				A3	
Document Number				LCD-PC945	
Date:				Thursday, July 05, 2007	Rev S0.2
Sheet				10	of 35

5

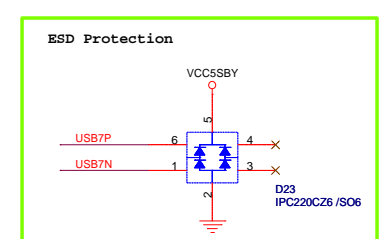
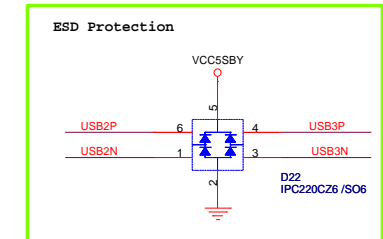
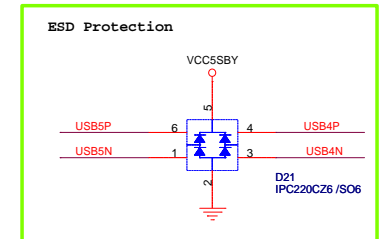
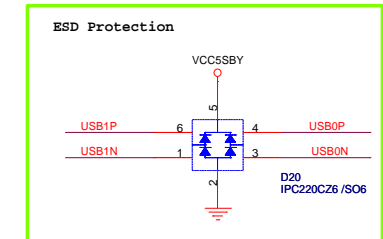
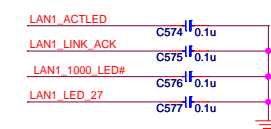


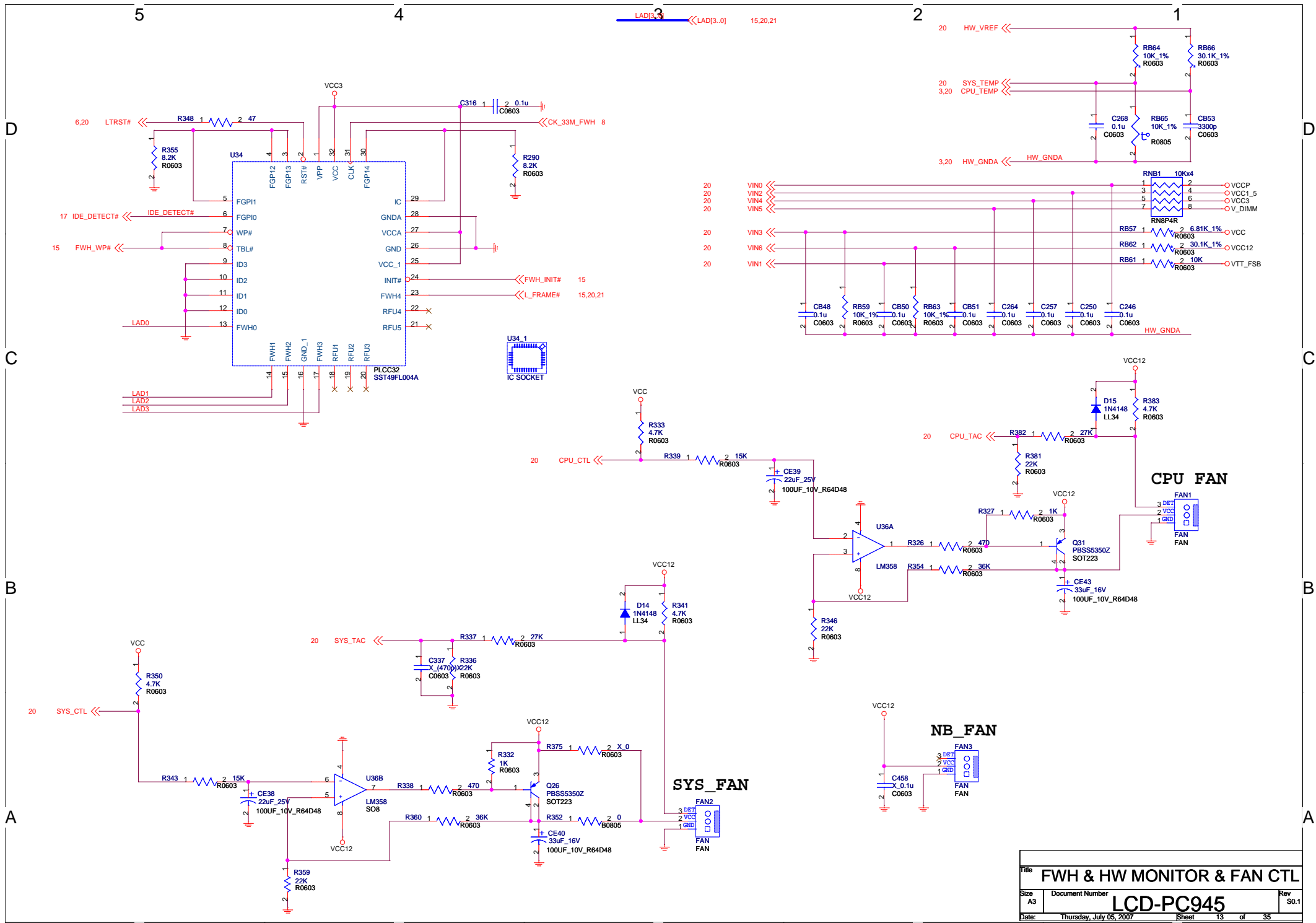
FRONT USB

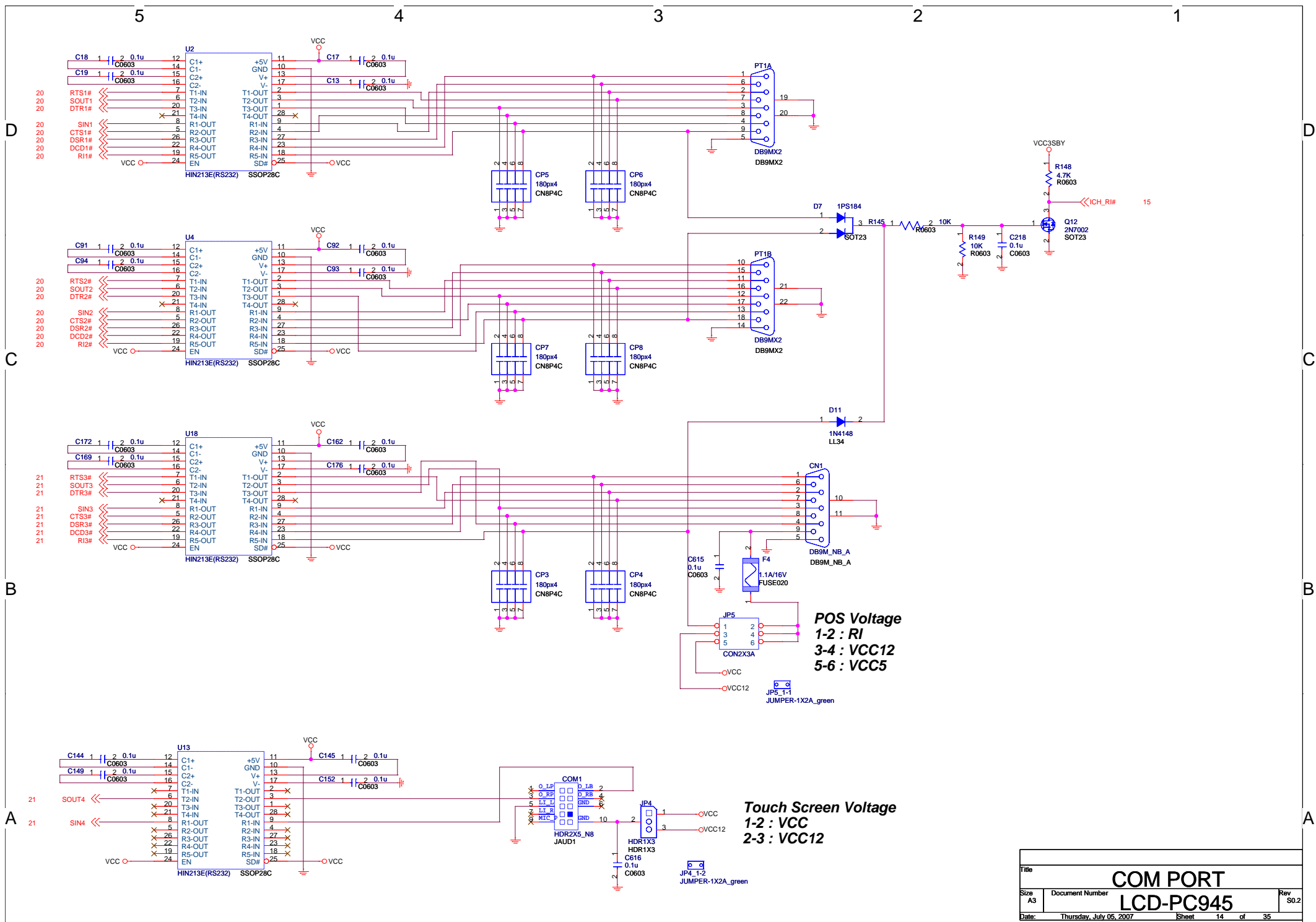


LAN1 CONNECTOR

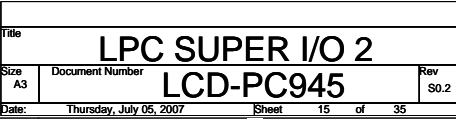
Giga-LAN	10/100-LAN
N58-14F0051-S42	N58-14F0051-S42
Link Green	Link Yellow
Active Blinking	Active Blinking
1000 Yellow	100 Green
100 Green	10 None
10 None	
14	14
13 Green	13 Yellow
11	11
12 Green	12 Green

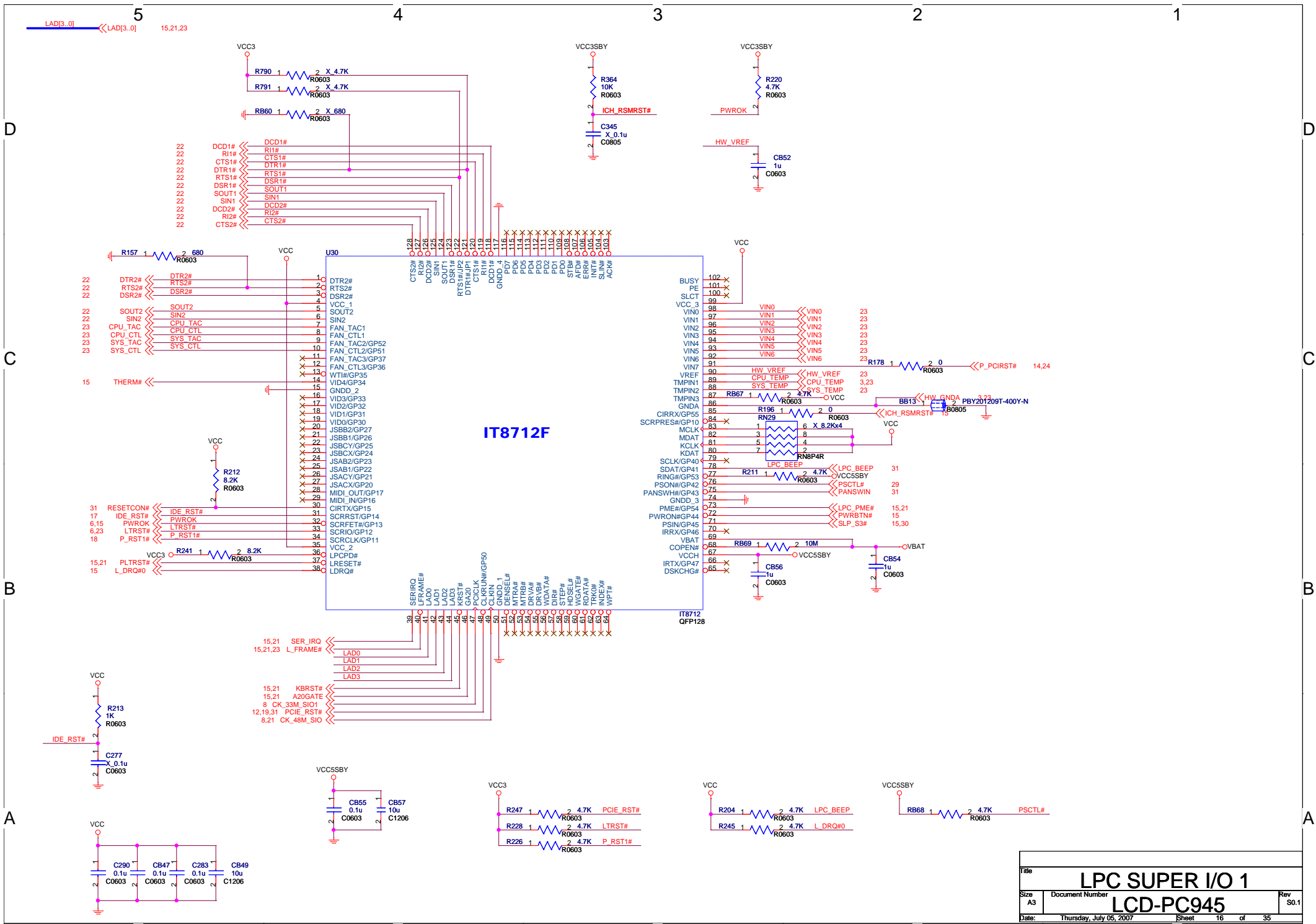






Title			COM PORT	
Size	Document Number	LCD-PC945		Rev
A3				S0.2
Date:	Thursday, July 05, 2007	Sheet	14	of 35





Title			
LPC SUPER I/O 1			
Size	Document Number	Rev	
A3	LCD-PC945	S0.1	
Date:	Thursday, July 05, 2007	Sheet	16 of 35

5 SDVOC_RED << C136 1 2 0.1u SDVO_R+
C0603
5 SDVOC_RED# << C137 1 2 0.1u SDVO_R-
C0603
5 SDVOC_GREEN << C138 1 2 0.1u SDVO_G+
C0603
5 SDVOC_GREEN# << C139 1 2 0.1u SDVO_G-
C0603
5 SDVOC_BLUE << C140 1 2 0.1u SDVO_B+
C0603

5 SDVOC_BLUE# << C141 1 2 0.1u SDVO_B-
C0603
5 SDVOC_CLK << C142 1 2 0.1u SDVO_CLK+
C0603
5 SDVOC_CLK# << C143 1 2 0.1u SDVO_CLK-
C0603
5 SDVOC_TVCLK << C121 1 2 0.1u TVCLK+
C0603
5 SDVOC_TVCLK# << C126 1 2 0.1u TVCLK-
C0603

B17 1 2 PB160808T-250Y-N
B0603

XI 1 2 27MHz XTAL_49US
C90 27p C0603
XO 1 2 C107 27p C0603

BB2 PB160808T-250Y-N
VCC2_5 1 2 B0603

CB7 10u C1206
CB12 0.1u C0603
CB14 0.1u C0603
CB13 0.1u C0603

SDVO_B+
SDVO_B-
SDVO_CLK+
SDVO_CLK-
SDVO_G-
SDVO_G+
SDVO_R-
SDVO_R+
SDVO_G-
SDVO_G+
SDVO_R-
SDVO_R+

R87 1 2 10K R0603

12 SD_DDC <<
12 SC_DDC <<
12 SD_PROM << R81 1 2 0 R0603
12 SC_PROM << R77 1 2 0 R0603

12,20,31 PCIE_RST# << R76 1 2 0 R0603
R75 1 2 10K R0603

5,12 SDVO_DATA <<
5,12 SDVO_CLK <<

BB1 PB160808T-250Y-N
VCC2_5 1 2 B0603

CB8 10u C1206
C76 0.1u C0603
C108 0.1u C0603
C75 0.1u C0603

R72 10K R0603
R68 10K R0603

CH7021

DL3 48
DL2 47
DL1 46
AGND_TVPLL2 45
TVCLK- 44
TVCLK+ 43
AVDD_TVPLL2 42
AVDD_TVPLL1 41
XO 40
XI/FIN 39
AGND_TVPLL1 38
DGND 37
VSYNC 36
DVDD 35
BSCAN 34
CHSYNC 33
V5V 33

BB3 PB160808T-250Y-N
VCC2_5 1 2 B0603
C86 0.1u C0603
C89 10u C1206

B30 1 2 PB160808T-250Y-N
VCC2_5 1 2 B0603
C109 0.1u C0603
C132 10u C1206

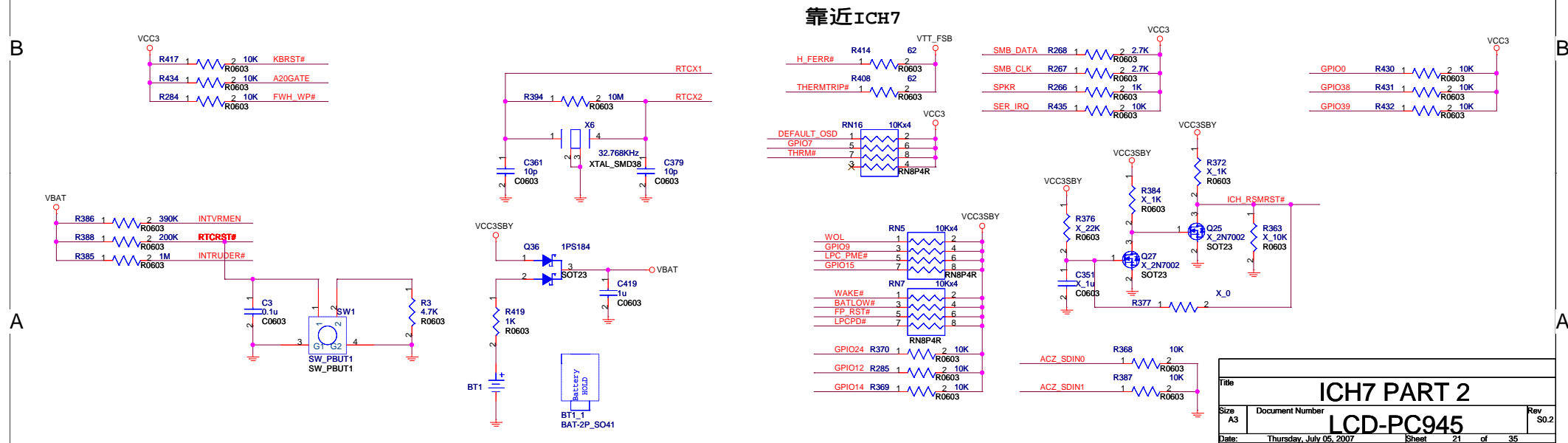
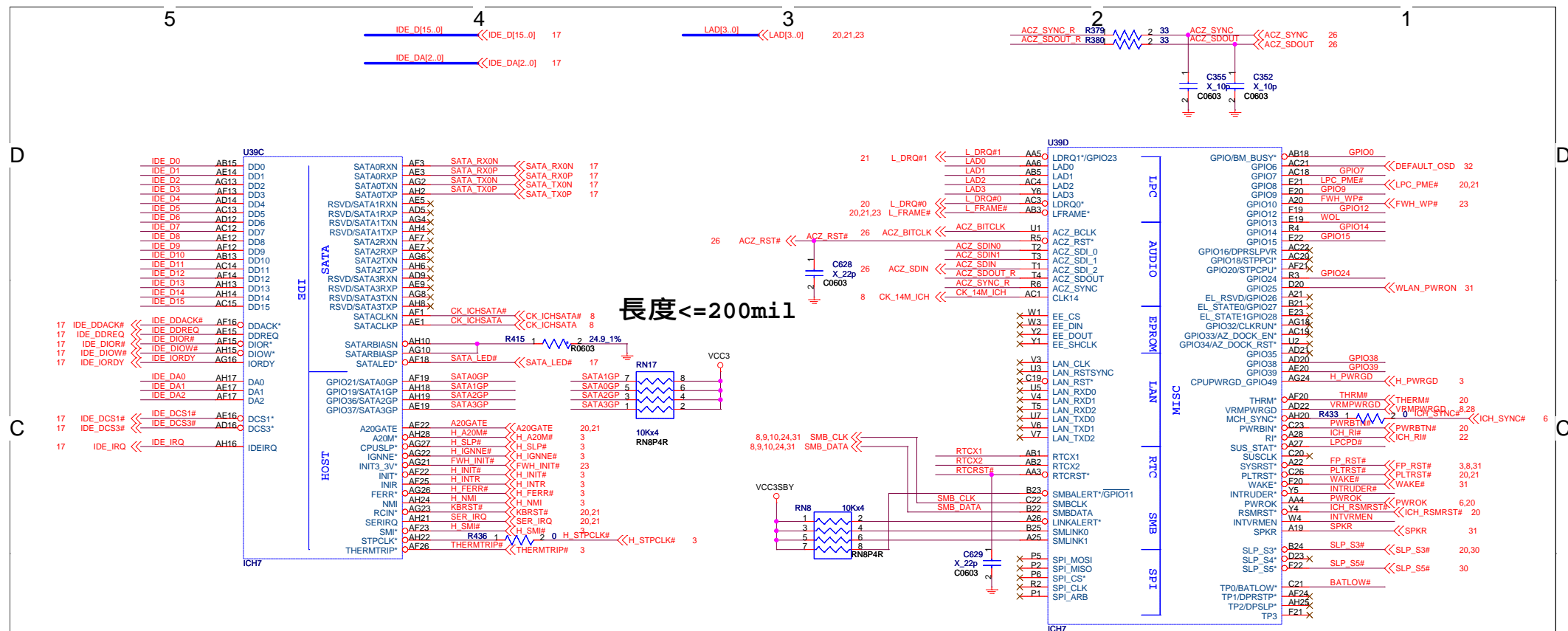
B19 1 2 PB160808T-250Y-N
VCC2_5 1 2 B0603
C68 0.1u C0603
C54 10u C1206

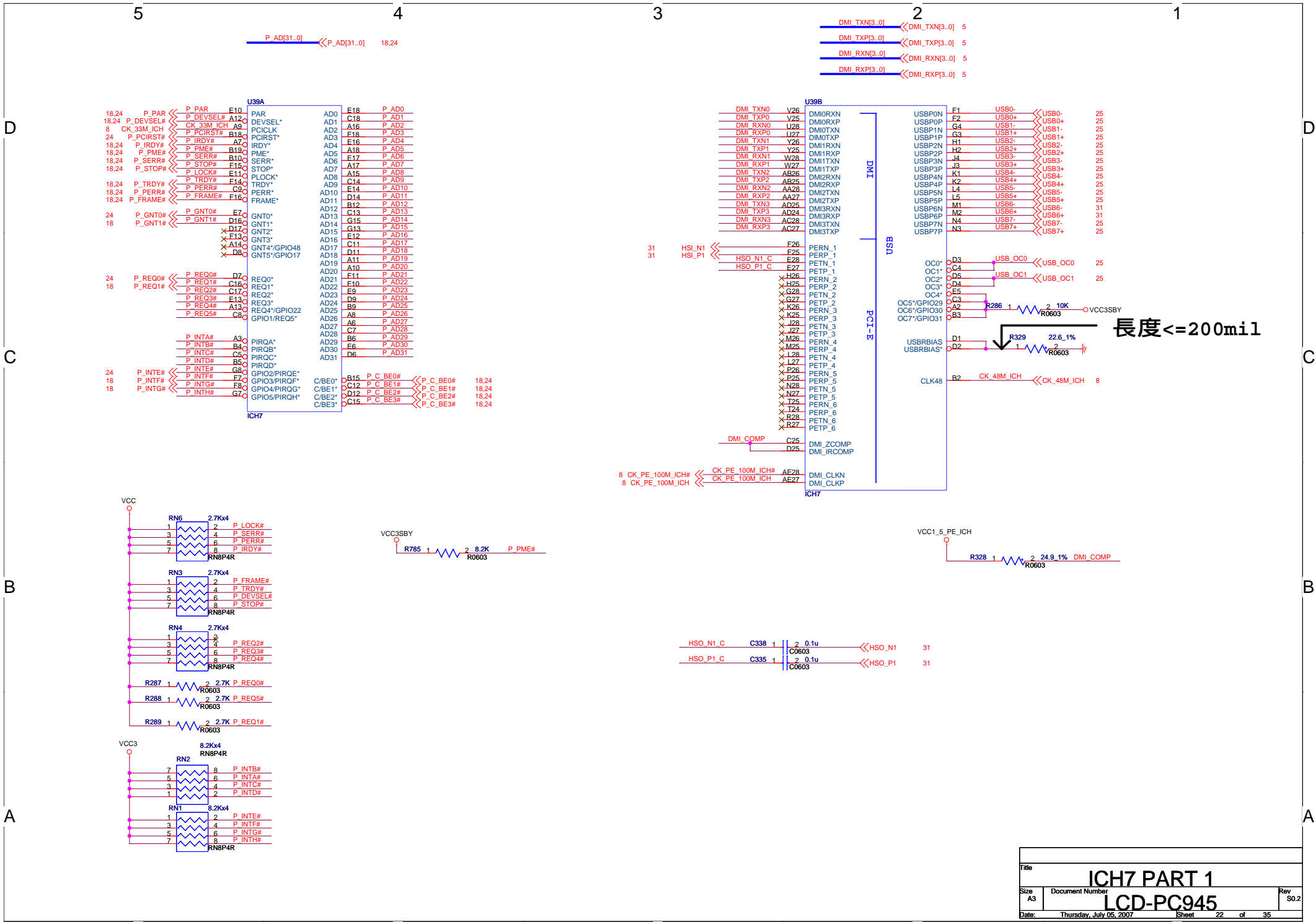
B18 PB160808T-250Y-N
VCC3 1 2 B0603
C51 0.1u C0603
C4 0.1u C0603
C5 0.1u C0603
C55 10u C1206

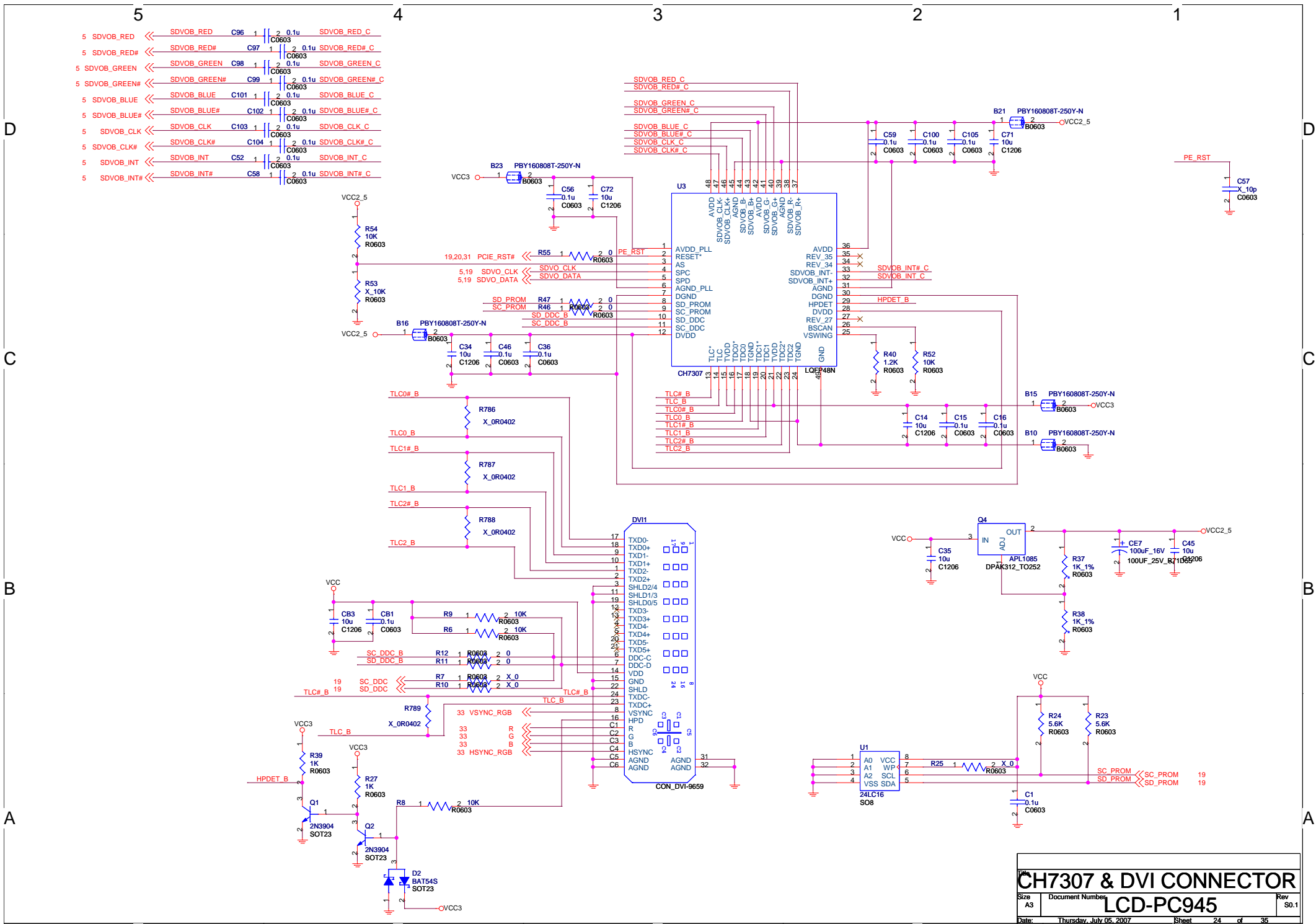
R44 75 R0603
RB3 75 R0603
RB4 75 R0603
R50 75 R0603
R51 1.2K R0603

R43 75 R0603
R42 75 R0603
R41 75 R0603

Title			
CH7021			
Size	Document Number	LCD-PC945	
A3			
Date	Thursday, July 05, 2007	Sheet	17 of 35
		Rev	S0.1







5

4

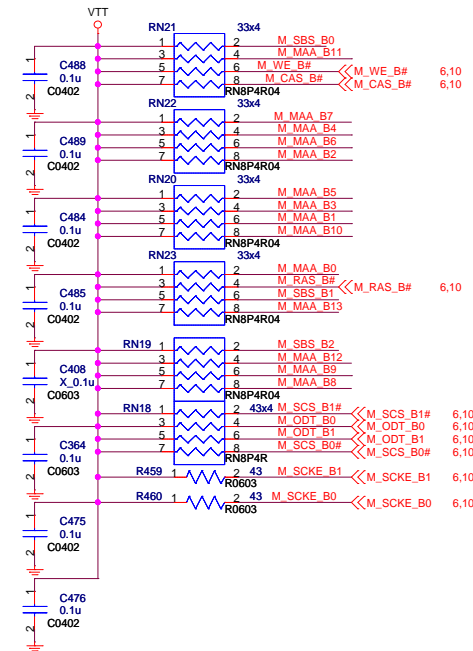
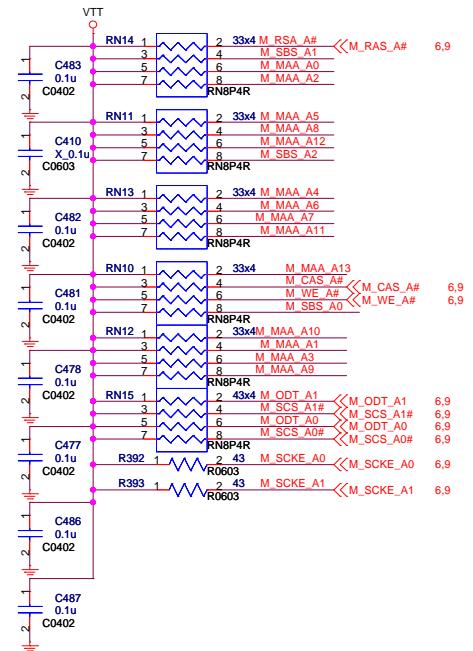
3

2

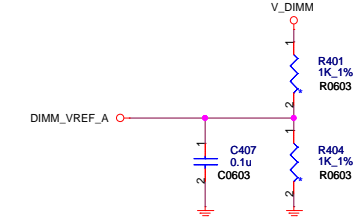
1

M_MAA_A[13..0] <<M_MAA_A[13..0] 6,9
M_SBS_A[2..0] <<M_SBS_A[2..0] 6,9

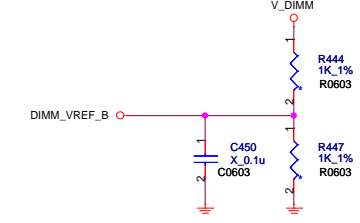
M_MAA_B[13..0] <<M_MAA_B[13..0] 6,10
M_SBS_B[2..0] <<M_SBS_B[2..0] 6,10



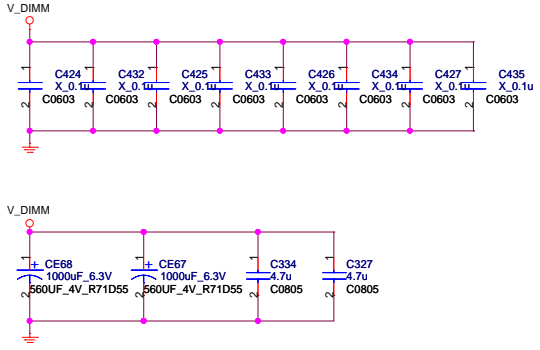
靠近CHANNEL A DIMM SLOT



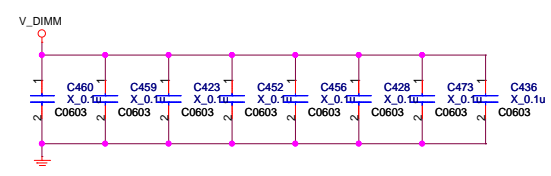
靠近CHANNEL B DIMM SLOT



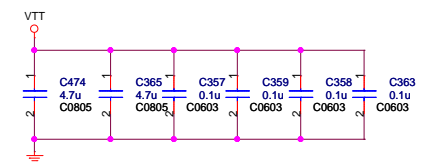
靠近CHANNEL A DIMM SLOT



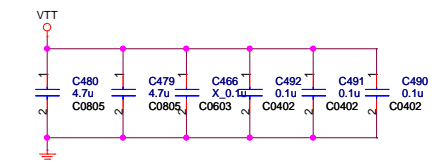
靠近CHANNEL B DIMM SLOT



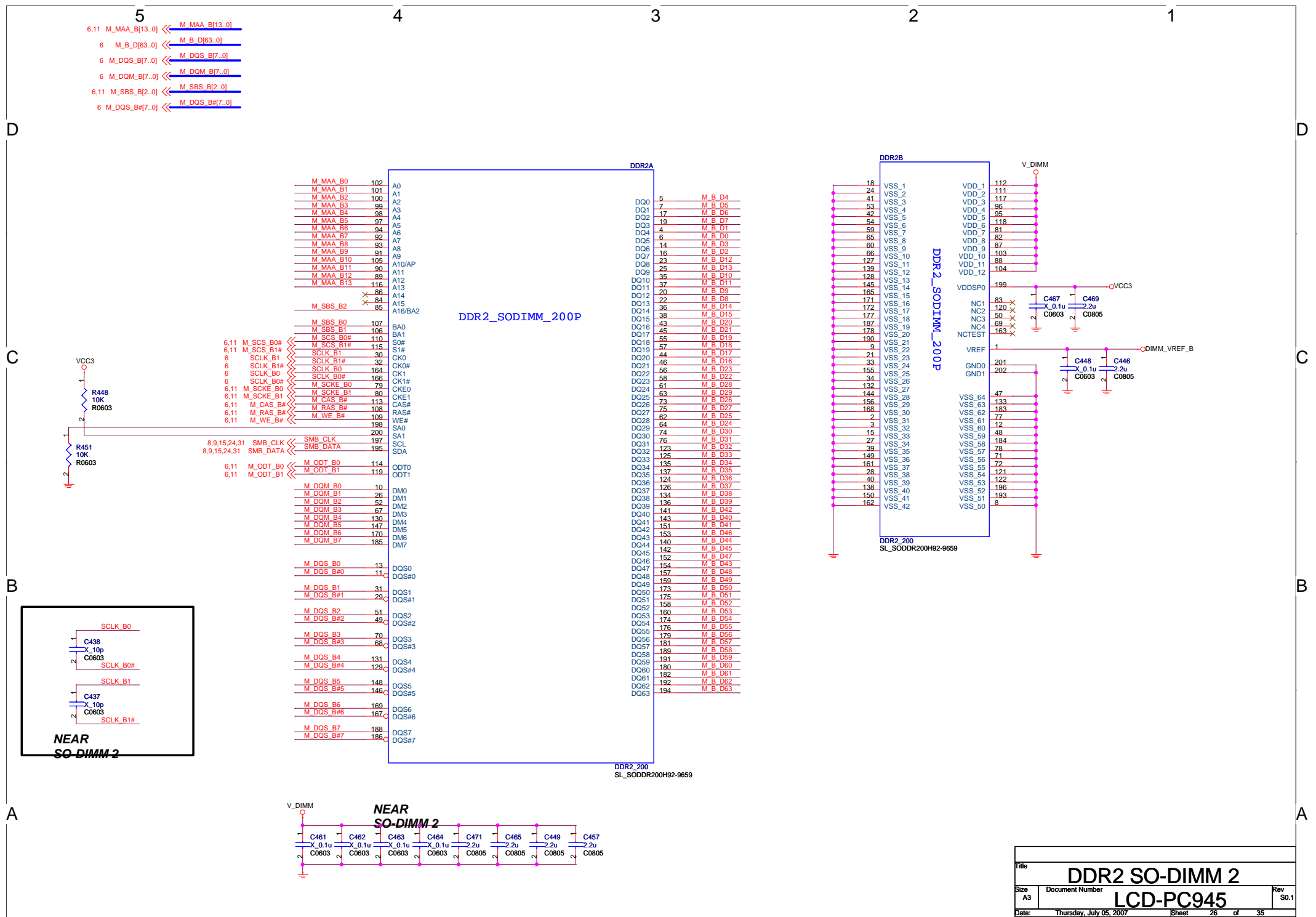
靠近CHANNEL A VTT ISLAND

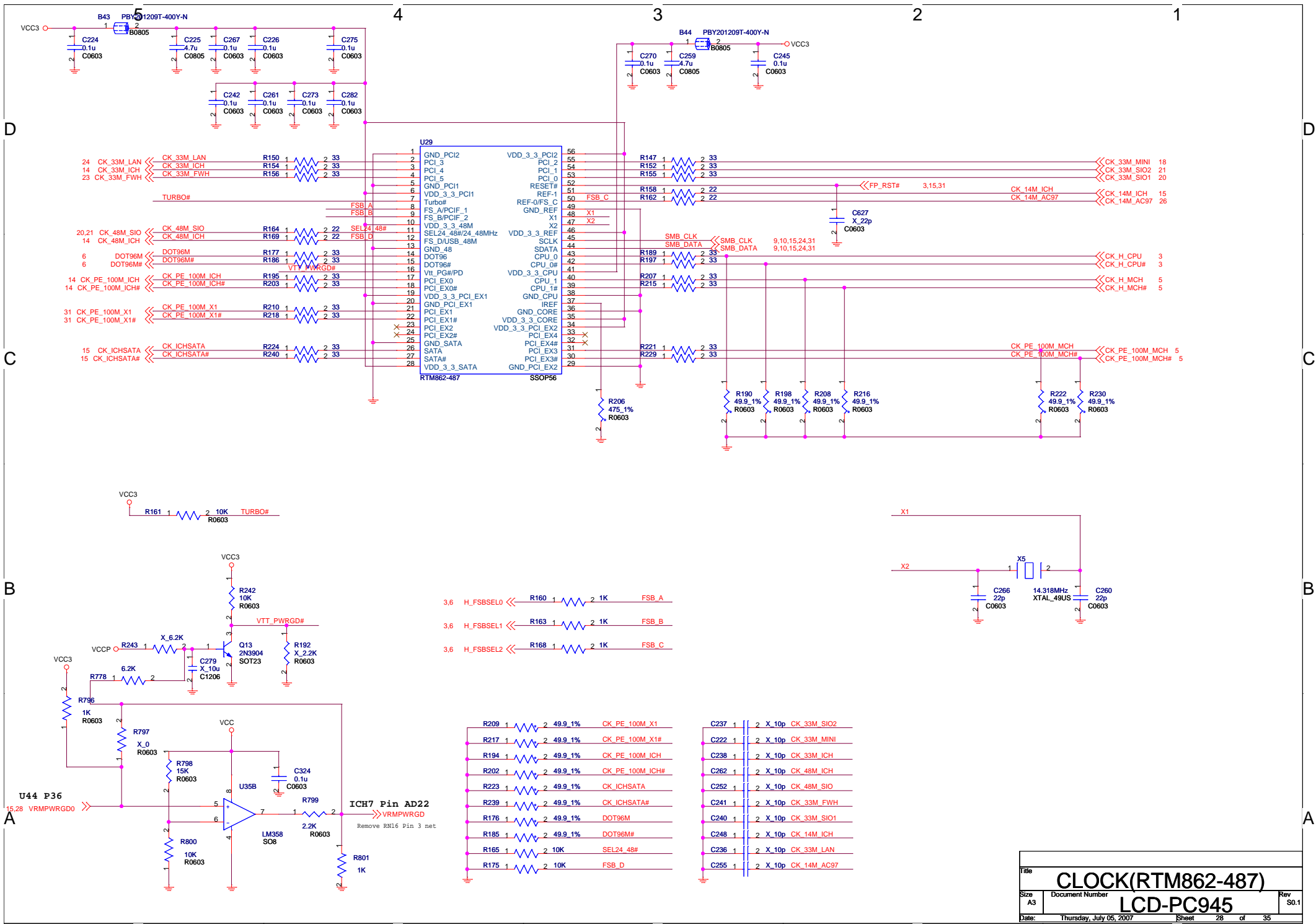


靠近CHANNEL B VTT ISLAND



Title			
DDR2 TERMINATION			
Size	Document Number	Rev	
A3	LCD-PC945	S0.1	
Date:	Wednesday, July 11, 2007	Sheet	25 of 35





5

4

3

2

1

D

C

B

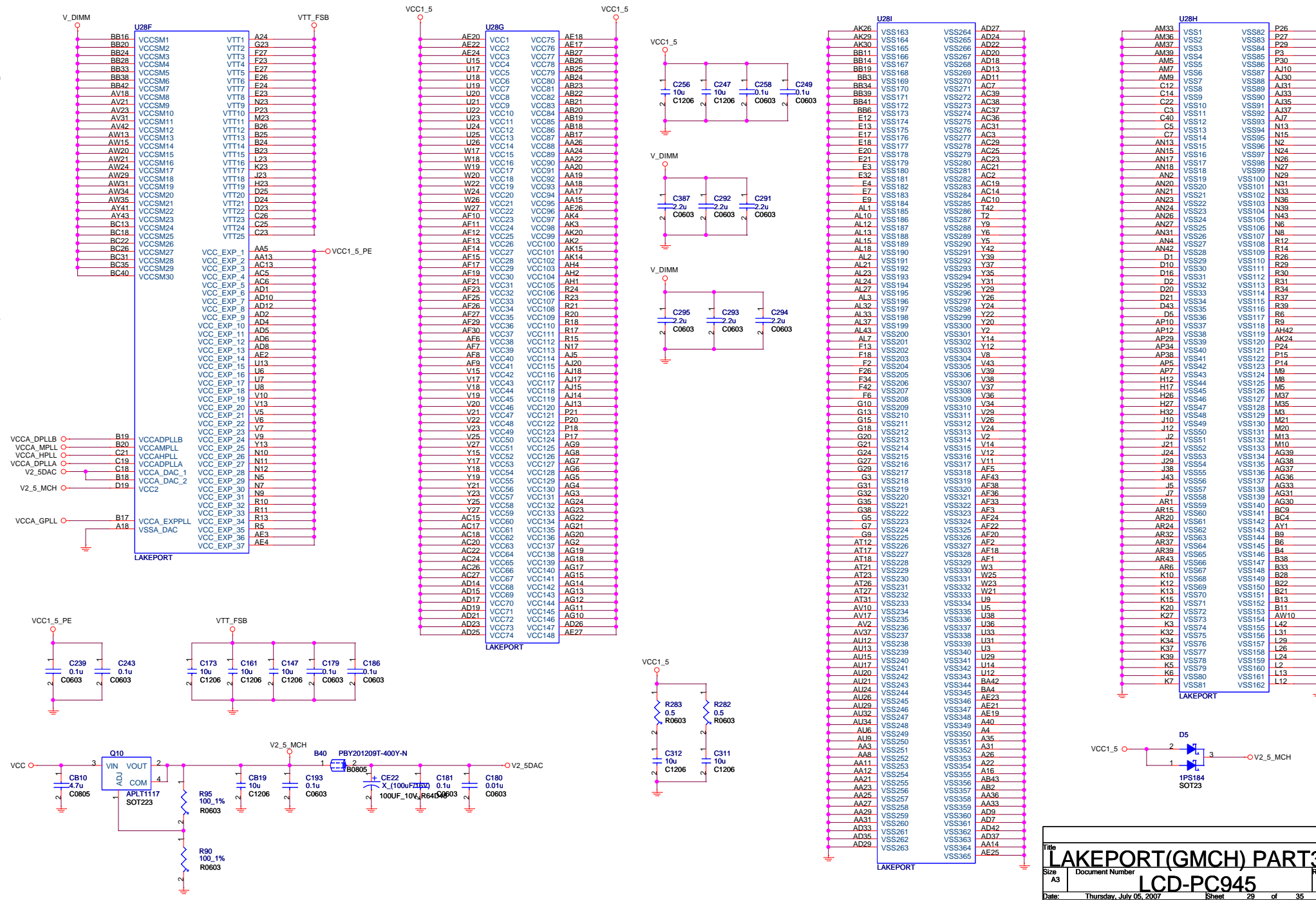
A

D

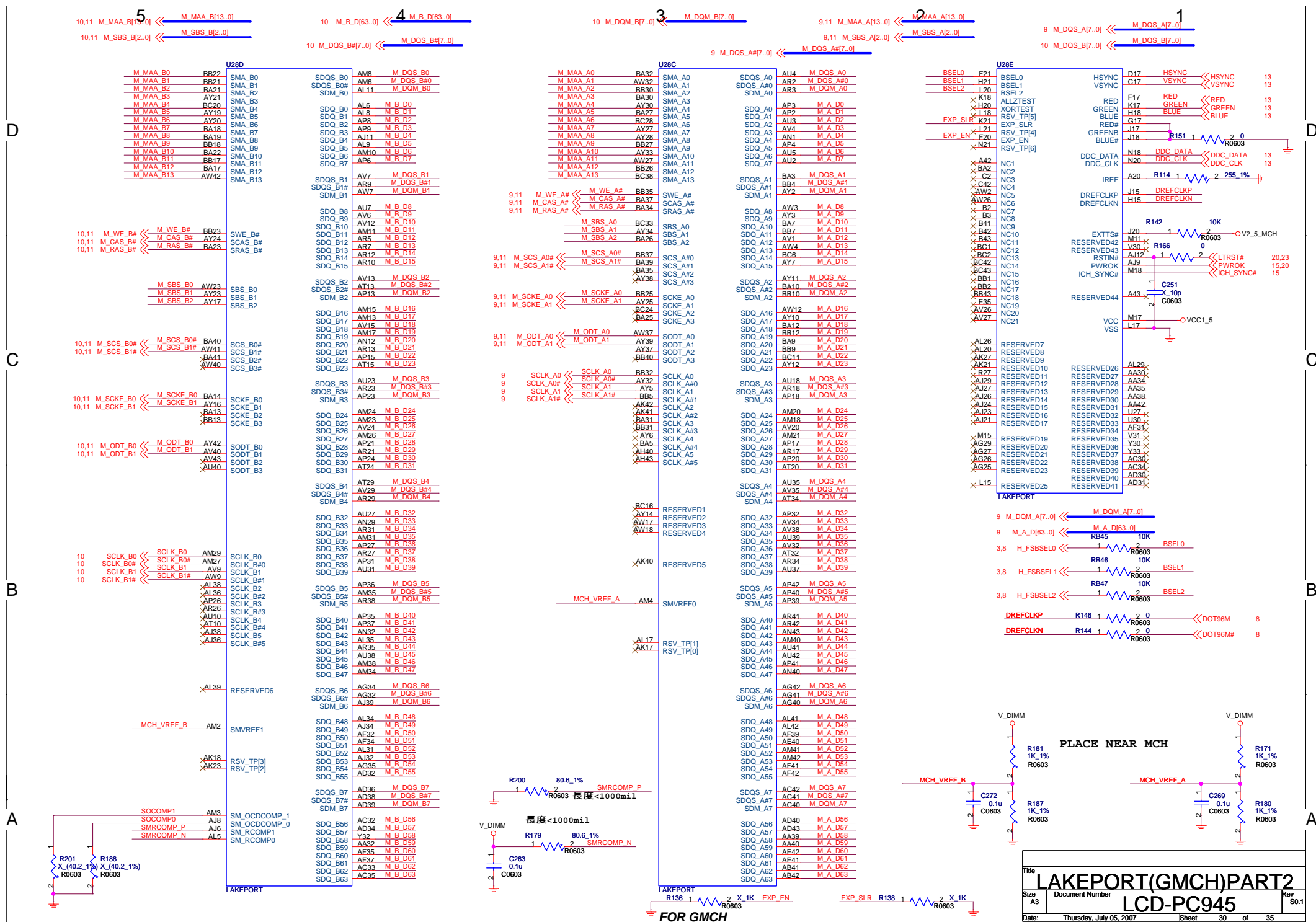
C

B

A



Title				LAKEPORT (GMCH) PART3	
Size				A3	
Document Number				LCD-PC945	
Date:				Thursday, July 05, 2007	
Sheet				29 of 35	
Rev				50.1	



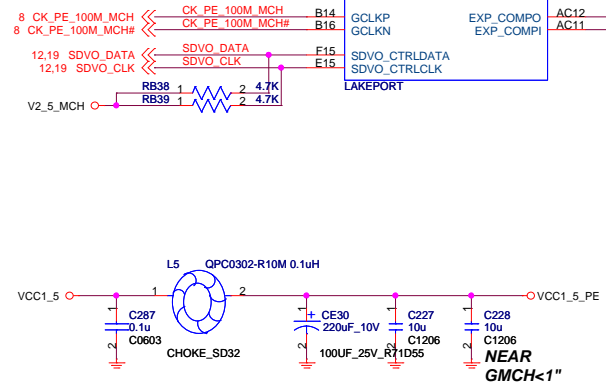
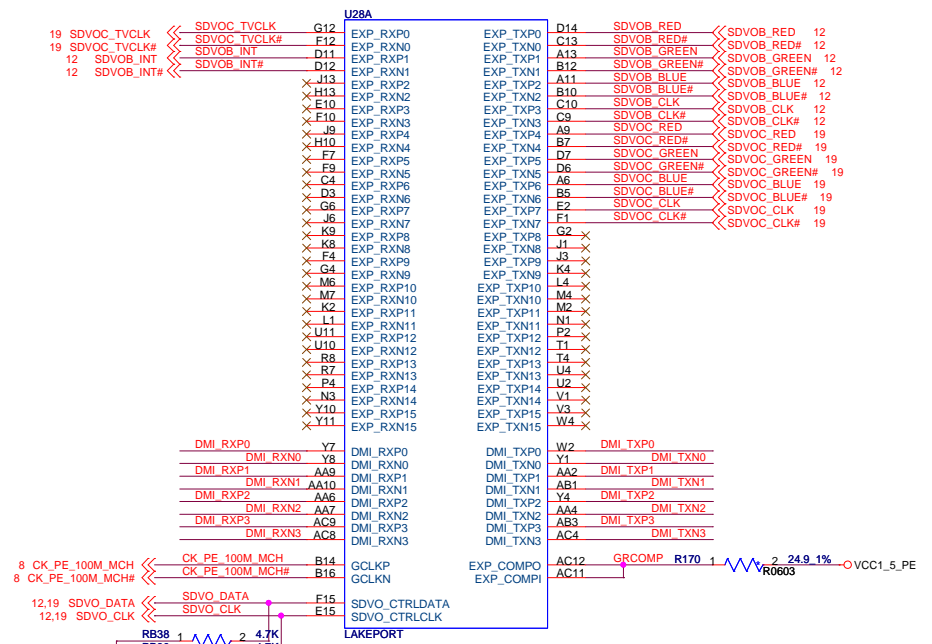
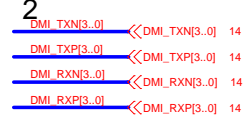
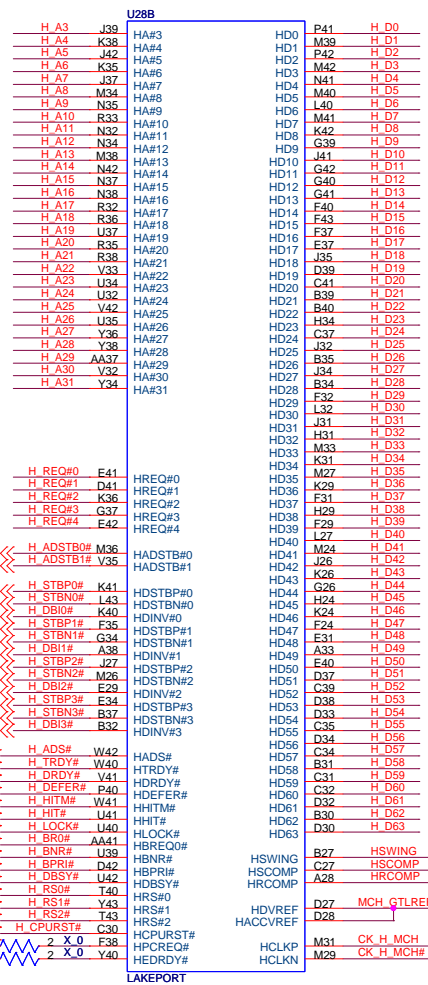
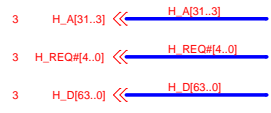
5

4

3

2

1



D

D

C

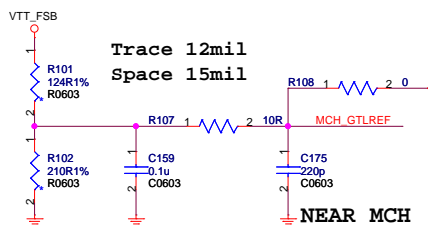
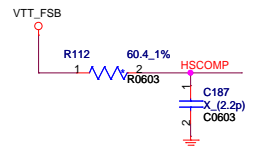
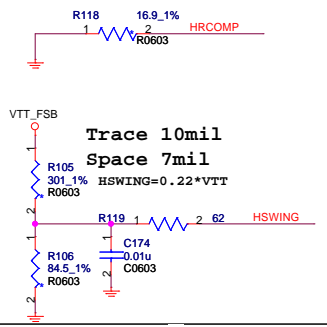
C

B

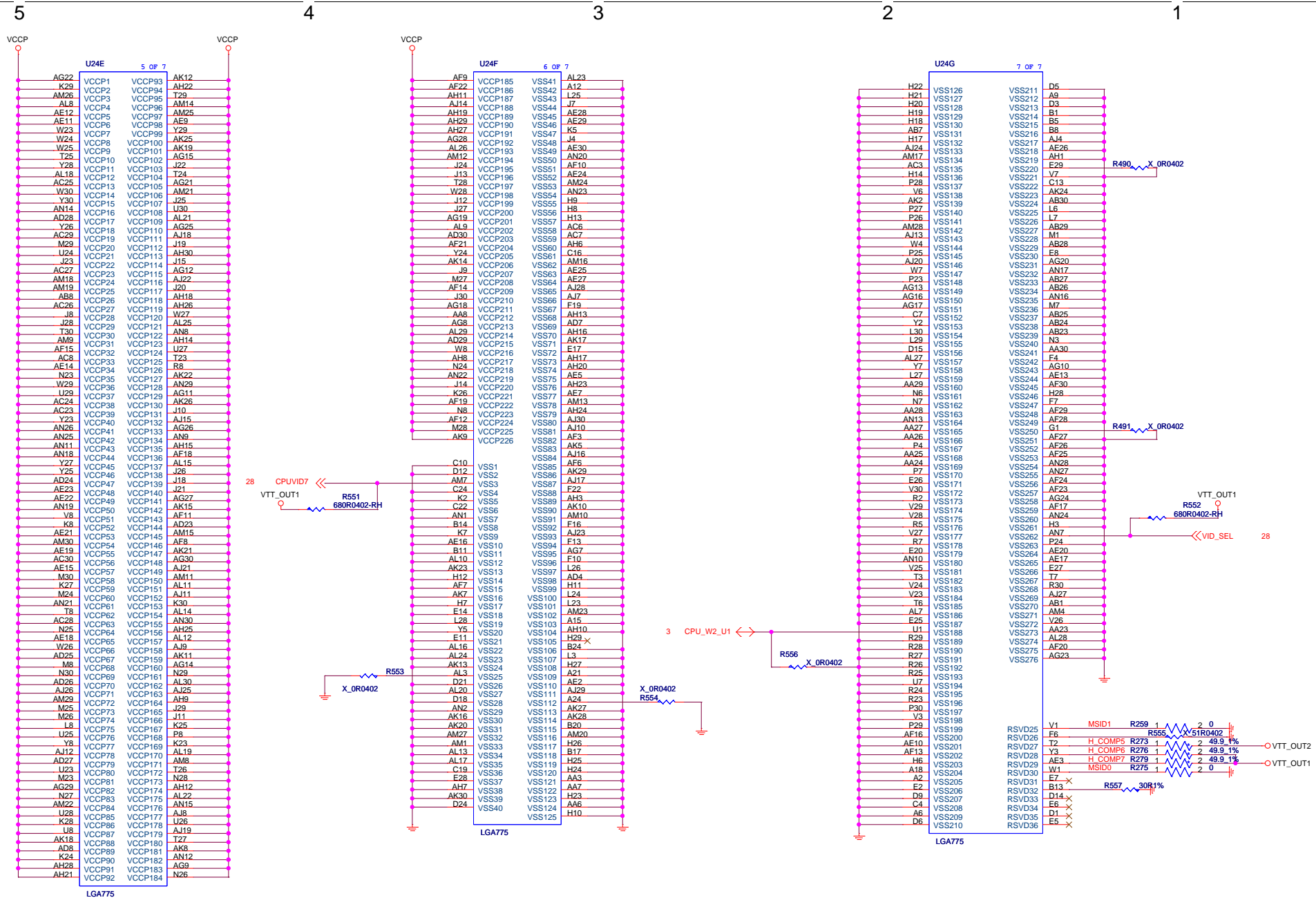
B

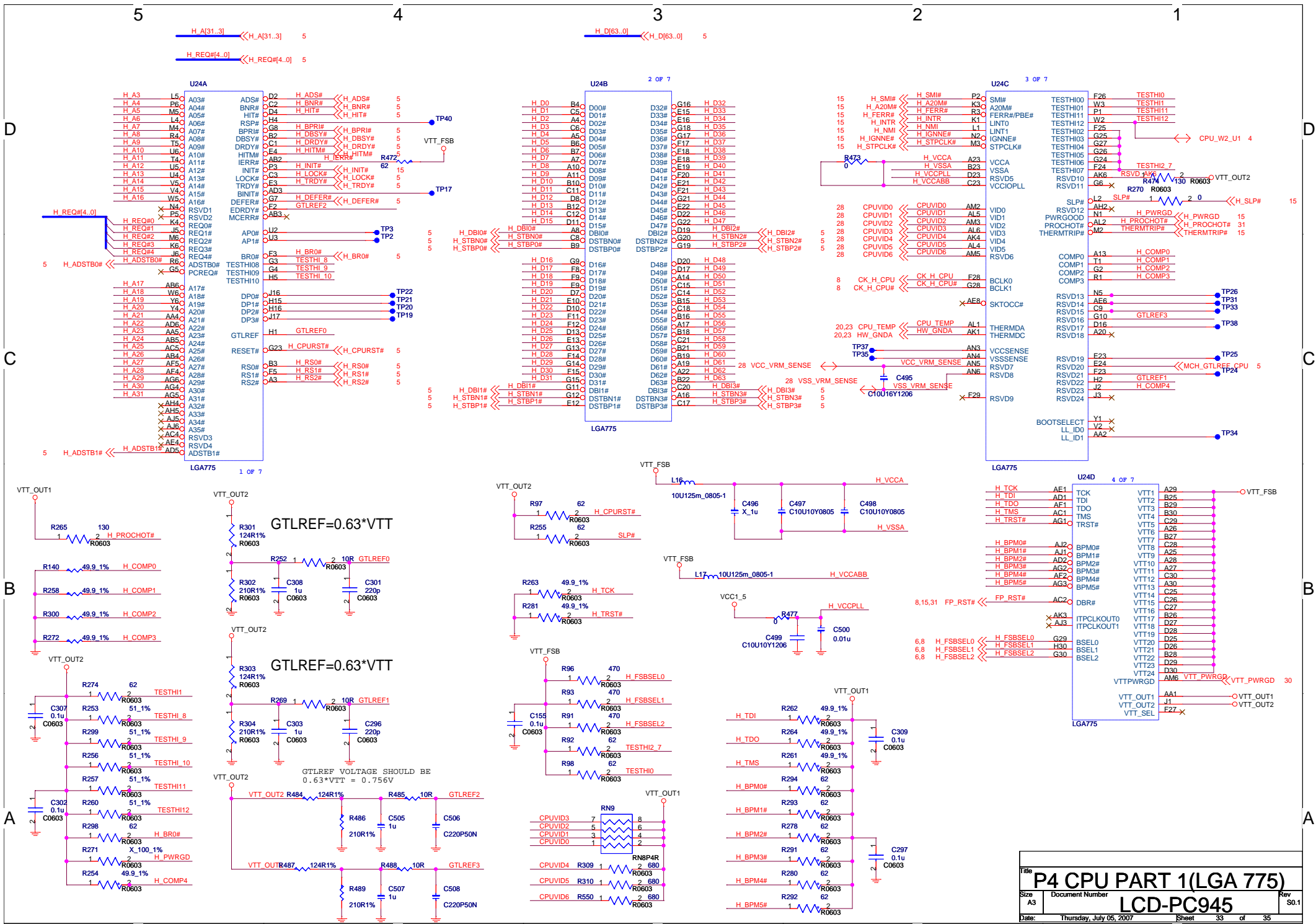
A

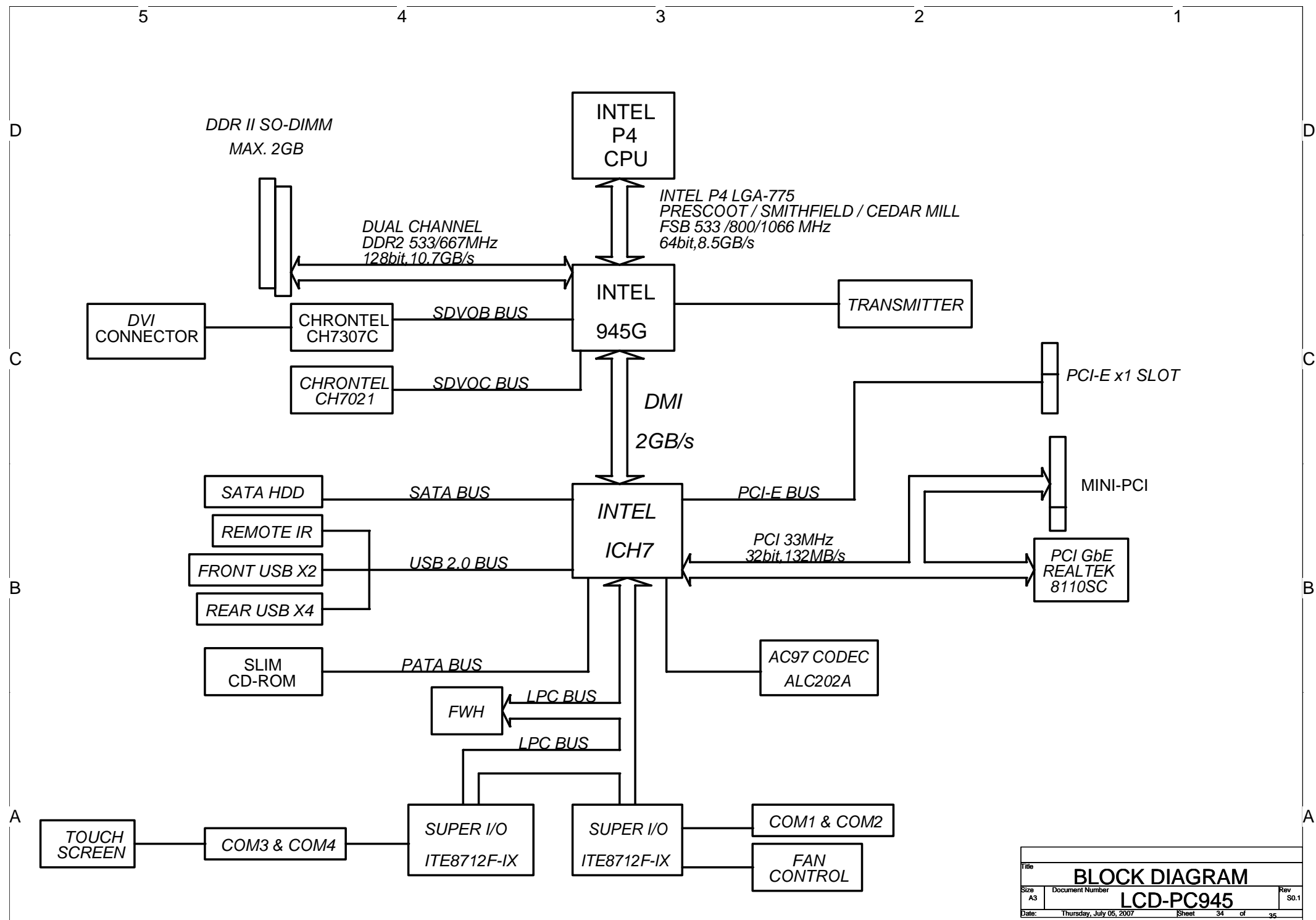
A



Trace 12mil
Space 15mil







LCD-PC945 REFERENCE SCHEMATIC

PAGE 01	INDEX SHEET
PAGE 02	BLOCK DIAGRAM
PAGE 03	P4 CPU PART 1(LGA775)
PAGE 04	P4 CPU PART 2(LGA775)
PAGE 05	LAKEPORT(GMCH)PART 1
PAGE 06	LAKEPORT(GMCH)PART 2
PAGE 07	LAKEPORT(GMCH)PART 3
PAGE 08	CLOCK(RTM862-487)
PAGE 09	DDR2 CHANNEL A SO-DIMM
PAGE 10	DDR2 CHANNEL B SO-DIMM
PAGE 11	DDR2 TERMINATION
PAGE 12	CH7307 & DVI CONNECTOR
PAGE 13	VGA CONNECTOR
PAGE 14	ICH7 PART 1
PAGE 15	ICH7 PART 2
PAGE 16	ICH7 PART 3
PAGE 17	IDE & SATA
PAGE 18	MINI PCI/VCC/VCC3
PAGE 19	CH7021
PAGE 20	LPC SIO 1
PAGE 21	LPC SIO 2
PAGE 22	COM PORT
PAGE 23	FWH & H/W MONITOR & FAN CTL
PAGE 24	PCI GIGALAN(RTL8110S)
PAGE 25	USB & RJ-45 CONNECTOR
PAGE 26	AC97 CDEC(ALC202A)
PAGE 27	AUDIO CONNECTOR
PAGE 28	CPU VCORE(VRD10.1)
PAGE 29	DISCRETE POWER 1
PAGE 30	DISCRETE POWER 2
PAGE 31	PCI-E SLOT & FPT
PAGE 32	TRANSMITTER
PAGE 33	PANEL DC-DC POWER

Title			INDEX SHEET		
Size	Document Number		Rev		
A3	LCD-PC945		S0.1		
Date:	Thursday, July 05, 2007		Sheet	35	of 35